



**Children's  
Health Fund**

# BIENNIAL REPORT

## 2015 & 2016



# Letter from our Founders



Sometimes an idea can change the world. Thirty years ago, we had such an idea. We saw children and families living in shelters, struggling with health conditions that we knew could be eliminated or managed with proper care. And we knew that if they got that care, they would be much more likely to rise up out of poverty.

But it was clear that there were many obstacles between them and that vital care. We came to the conclusion that if they couldn't get to the doctor's office, we would bring the doctor's office to them. And so the first of our mobile medical clinics was born.

Over the past three decades, our fleet of big blue doctor's offices on wheels has grown to over 50. They are instantly recognizable fixtures in communities across the nation. Our mobile clinics are the most visible expression of our belief that every child deserves access to quality health care. And, as these clinics have plied the streets and highways, bringing doctors, nurses, mental health counselors and nutritionists to disadvantaged children, we have driven that original idea down new avenues.

From electronic health records to telehealth, we have pioneered groundbreaking new technologies that have improved access to and quality of care for tens of thousands of children. With our Healthy and Ready to Learn initiative, we are developing

a model and resources that promise to address the critical link between health care and school success. From Hurricane Katrina to the Flint Lead Crisis, our mobile clinics have responded to disasters affecting thousands of children. Through our unique relationship with Columbia University's renowned National Center for Disaster Preparedness (NCDP), CHF has garnered the information, guidelines and programs to ensure that young people are protected before and during disasters. And, year after year, we have been crusaders on Capitol Hill and in state and local governments, tireless in our defense of programs and policies that empower the most vulnerable in our society to access the life-changing health care they deserve.

Our idea has grown and flourished thanks to our phenomenal staff, and to our countless supporters and partners. Together we have given hundreds of thousands of children a chance to live healthy and productive lives. And in so doing, we have helped change our world for the better.

Irwin Redlener, MD

PRESIDENT EMERITUS & CO-FOUNDER

Paul Simon

CO-FOUNDER

Karen Redlener

EXECUTIVE VICE PRESIDENT AND  
CO-FOUNDER

## Statement from **Irwin Redlener**

As we enter our 30th year, Children's Health Fund is making some exciting leadership changes that will ensure our work on behalf of America's most vulnerable children continues long into the future. I am thrilled to announce that my friend and colleague Dennis Walto will be taking over the helm as CHF's new Chief Executive Officer. Dennis's long relationship with CHF began when I hired him shortly after our founding and, twenty-five years later, we were lucky enough to be able to rehire him with the intention of him succeeding me. I am beyond confident that Dennis will be an outstanding leader and will take CHF to new heights and in exciting directions.

# Letter from our CEO



**L**ike children, organizations grow, develop and mature. After three decades honing our practice in the trenches, we at Children's Health Fund have learned crucial lessons about bringing essential medical care to America's neediest children. In our 30th year,

CHF is reaching a new stage in its mission and we are finding more ways to reach children who still face barriers to accessing health care. While maintaining our provider/advocate balance, we find ourselves evolving into a network and knowledge organization in order to not only provide high quality health care to America's most vulnerable children, but also to increasingly raise their voices to ensure that their stories are heard.

For even as we have seen the devastating effects of poverty on the health of young people, we have also seen the amazing opportunities our interventions

So what will I be doing? As I move into my new roles as President Emeritus and Senior Advisor, I will be working with Dennis and senior staff as needed, with a special emphasis on our advocacy and communications agenda. I will remain an active member of CHF's board of directors and help lead the board's new program committee. In addition to my work with CHF, I will continue leading Columbia University's National Center for Disaster Preparedness, including nurturing its growing relationship with CHF's work on disaster response readiness.

Together, we will continue CHF's incredible work bringing health care to America's most vulnerable children.

make possible. Data from our Health and Ready to Learn pilot schools in New York City demonstrates that by addressing health barriers to learning, we can help keep kids in school and improve their chances for success. We are seeing remarkable improvements in the health of babies born to mothers who have gone through our group care programs. Our telehealth and telemedicine initiatives are connecting patients to doctors across distances that, for these disadvantaged families, were once insurmountable. And our voice—your voice—continues to make sure that the most disadvantaged are at the policy-making table.

Make no mistake, the challenges remain significant, but so too are the many community assets we bring to our work every day. As groundbreaking research has recently shown, some 20 million children are still not getting the health care they need. And yet the children and families we serve persevere, and their spirit drives us to do more.

The way we see it, the greater the challenge, the greater the opportunity. As we move forward into our fourth decade, we are rising to meet challenges with our eyes trained on the limitless potential of America's kids. Building on our strong foundation, we are adopting an asset-based approach. As this report of 2015 & 2016 finances and activities demonstrates, we are able to take these steps through a vibrant partnership of individuals, corporations, foundations, and government. Together, through collaboration, we are making great strides in protecting our most precious resource: our children.

Thank you for all you have done and what you continue to do.

Onward!

A handwritten signature in black ink, appearing to read 'Dennis Walto'.

**Dennis Walto**  
CHIEF EXECUTIVE OFFICER



# One Nurse Helps a Young Student **Move Forward**

**A**t Cody High School on the West Side of Detroit, many kids have tough lives. Just ask Megan Holt, one of the school's registered nurses.

"There's never a dull day at Cody," she says. "We see kids with asthma attacks, kids who come in with physical injuries from fights. We also do physicals, immunizations, and take care of bumps, bruises, headaches. For a good chunk of the kids here, I would say that this clinic and the Children's

Health Fund mobile clinic, which visits the school on a regular schedule, are their primary source of health care."

Many of the students at Cody come from struggling families, but few have as many challenges as Mancell Lyttle. The quiet teen has cerebral palsy and requires the use of a wheelchair. "When Mancell first came in, he was in the same wheelchair he'd been in since sixth grade. It was way too small for him, and it was falling apart." Nurse Holt worked with various social service providers to get him a new wheelchair.

Like Children's Health Fund's projects around the nation, case management and referrals are key factors in the comprehensive care our clinicians offer to vulnerable in children. In Mancell's case, that was especially critical. "We have transportation services available for patients who need services we can't

“

...because we're here,  
we can take care of kids,  
and give them the health  
education they need to take  
care of their own health.

**-Megan Holt, RN**

”

Megan Holt, RN, working with student Mancell Lyttle



Mancell navigating the halls of Cody High School, Detroit, MI

provide here,” says Nurse Holt. “So we were able to get Mancell to his sessions with a physical rehabilitation specialist.” And Nurse Holt didn’t stop there. She also coordinated Mancell’s transport to driver training classes.

Nurse Holt goes the extra mile because she knows that this health care is key to helping these disadvantaged kids overcome the tremendous challenges they face. “If we were not able to provide these services, kids would miss a lot more school, there wouldn’t be as much continuity of care, and a lot of them would end up in the emergency room,” she says. “But because we’re here, we can take care of kids, and give them the health education they need to take care of their own health.”

Throughout high school, Nurse Holt helped Mancell get around. Today, the resilient young man is in college and he credits her support for helping him get there.

## Giving Birth to a New Model of Care

In the South Bronx, there’s a revolution going on. And it’s pregnant women and new mothers who are making it happen.

At our Center for Child Health and Resiliency (part of Montefiore Medical Center), our innovative group care program is changing the way women receive prenatal and pediatric services—and changing the way doctors everywhere think about that care.

The group model features all the basic services that a pediatrician would provide in an individual visit. But the group setting enables mothers to form supportive communities, sharing stories, meals and hugs. It also gives the mothers and clinicians much more time to spend together, and creates time for visits from counselors, nutritionists and other health educators.

With improved outcomes, including lower rates of obesity and improved social and emotional development, our group care program is ensuring that kids get the very best care, right from the start.



Happy, healthy moms and babies in the South Bronx




# School Success in Clear Sight

**T**he boy was acting up and out of control. The teacher was at her wits' end, sending her unruly student to the principal's office almost every day. A number of interventions were tried. But then, the Healthy and Ready to Learn team from Children's Health Fund got involved and got him a pair of glasses. His teacher saw a change almost overnight. The student became more confident, attentive and motivated to learn.

A simple pair of glasses can go a long way, but they have to be within reach. Whether it's uncorrected vision, uncontrolled asthma, or mental health conditions, our Healthy and Ready to Learn pilot program is not just screening and identifying Health Barriers to Learning (HBL), it is providing pathways for students and parents to overcome them. We know, for example, that impaired vision impacts children's ability to read at grade level and that,

when corrected, test scores improve. Over a third of the students evaluated in our pilot schools failed visions screenings. Children's Health Fund brings optometrists to the schools to perform full eye exams and provides every child who needs them with two pairs of glasses—one for school and one for home—at no charge. The difference this makes can be profound.

In its second year, our Healthy and Ready to Learn pilot program in three low-income New York City public elementary schools increased focus on homelessness and attendance. At least 25% of the families we serve are homeless, and studies clearly show that homelessness is a major cause of chronic absenteeism, defined as missing 20 or more days per school year. Compared to children with permanent housing, homeless children are nearly twice as likely to be chronically absent. And the results of such absenteeism can have significant long-term consequences: lower academic achievement, higher drop out rates, and reduced college and career preparedness. To address this, our attendance team launched a program called Success Mentors.



Academic and health research confirms that specific health-related conditions impede cognitive development and can hinder attendance and learning.



Students identified as chronically absent were paired with mentors who checked in with them every day and developed a relationship with their families. On average, these students increased their attendance by eight additional days per school year.

One third-grade student, who had previously repeated second grade due to excessive absences, increased his attendance by 13 days. His teacher reported that over the course of the school year, he showed significant improvement in his motivation, homework completion rate, and reading level. And as a result, he proudly moved on to fourth grade in the fall of 2016, where he says, he hopes to be “even more AWESOME.” We’re confident that—with the Healthy and Ready to Learn team at his side—he will be.



In 2016, Children’s Health Fund began to develop a Healthy and Ready to Learn Resource and Training Center, which will act as both a repository of information as well as a training and support resource for parents and educators working with children in pre-K through fifth grade. This work is being carried out in collaboration with the NYC Office of School Health and the New York City Council.



# When Crisis Calls

**W**hen catastrophe strikes, it's kids who suffer the most. Children's Health Fund's long history of disaster response means we are able to jump in with agility, experience and compassion. Through our collaboration with Columbia University's National Center for Disaster Preparedness (NCDP), we document and assess the impact of large-scale disasters on children, and create best practices to aid in a successful return to normal life. In 2016, we responded to two severe crises that threatened, and continue to provide challenges for, tens of thousands of vulnerable kids.

When President Obama declared a state of emergency in Flint, Michigan, due to the discovery of toxic lead in the water system there, Children's Health Fund immediately responded by sending one of our big blue mobile medical clinics to provide assistance, including lead testing and health education.

Exposure to lead-tainted water has left thousands of children in Flint vulnerable to developmental delays, increased hyperactivity, and cognitive problems—all of which are irreversible. Seven months later, Children's Health Fund added a Community Support and Resiliency mobile clinic to address the mental health issues caused by this trauma. Working in partnership with Genesee Health Systems, we're committed to providing this injured community with a support system to help them move forward.

At the Clinton Global Initiative Annual Meeting in 2016, we took this commitment further by partnering with more than 20 other companies and organizations to announce mhNOW: Closing the Mental Health Treatment Gap. The mission of mhNOW is to catalyze, connect and support cities dedicated to driving change in the field of mental health, and to close the health gap in 30 cities by

2030. We are excited to be part of this innovative program that will help us keep our promise to the people of Flint as they face current and future challenges.

**I**n August 2016, Southern Louisiana was devastated by a "Thousand Year Storm" that dumped three times as much rain on the region as did Hurricane Katrina. Over 30,000 people were evacuated, and at least 100,000 homes and businesses were damaged. Despite such incredible devastation, the storm and its aftermath received woefully little national attention. But Children's Health Fund, which has been providing critical mental and medical health care in the region since Hurricanes Katrina and Rita, sprang to action.

With school suspended for several weeks and many of our regular parking sites underwater, our Baton Rouge mobile clinics relocated to Our Lady of the Lake Medical Center to help with the high demand for emergency services. The Baton Rouge team also staffed emergency shelters, providing medical care and emotional support to thousands of distraught and displaced children and families. The delayed start to the school year meant many parents were left with limited options for childcare as they struggled to get to jobs and critical FEMA appointments. In response, we created a day camp with mental health support,



On the Mobile Unit, Flint, MI

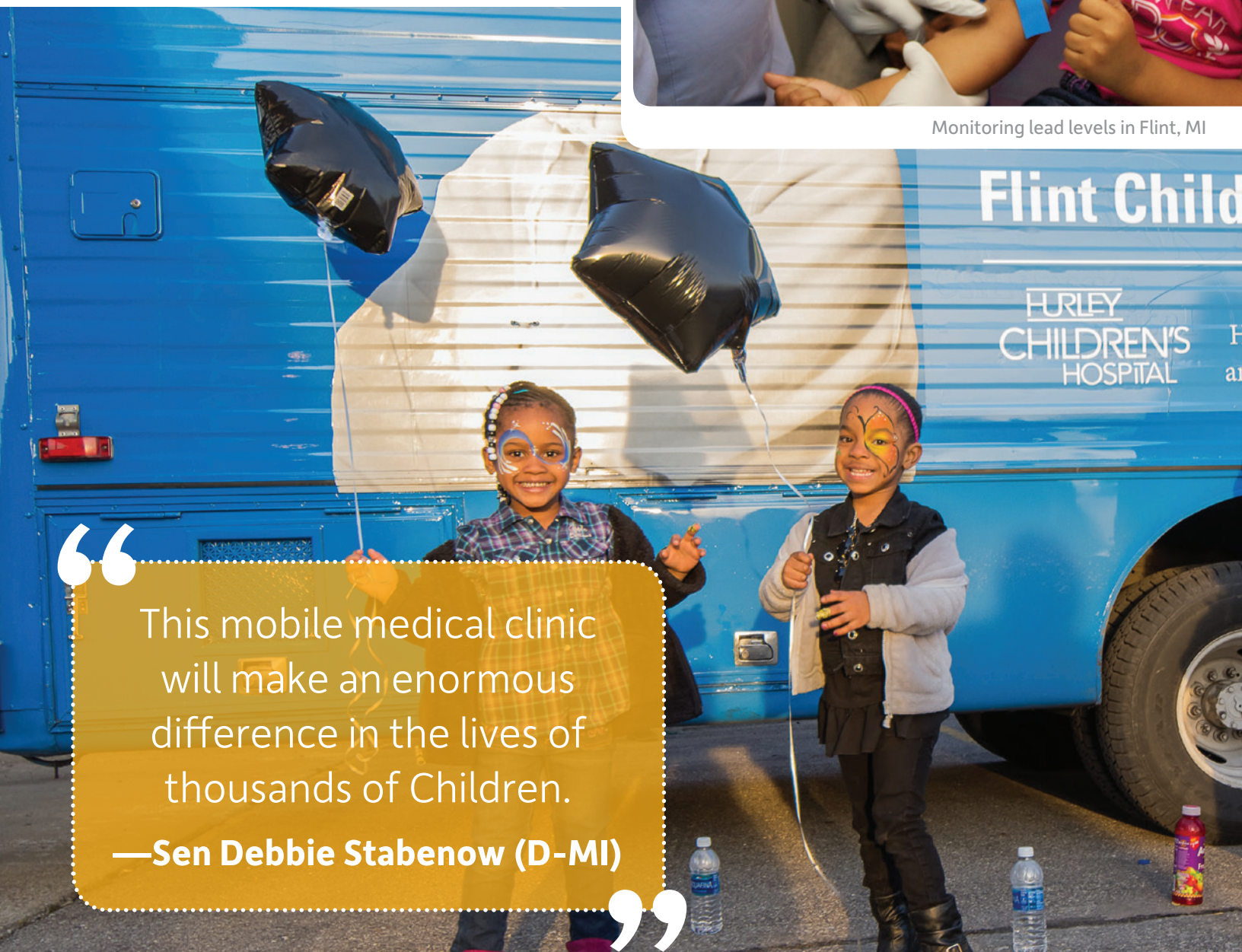


arts and crafts, and physical activity to give children a space to learn and play, and rediscover a sense of normalcy.

Children's Health Fund believes that there is no deadline for a community to heal after disaster. Our philosophy has always been commitment for the long term. In both Flint and Louisiana, we will continue to work to make sure children and families are not further burdened by unidentified or undertreated health conditions, and that they will not fall through the mental health care gap.



Monitoring lead levels in Flint, MI



“

This mobile medical clinic will make an enormous difference in the lives of thousands of Children.

—Sen Debbie Stabenow (D-MI)

”



# Driving Towards a **Healthy Future**

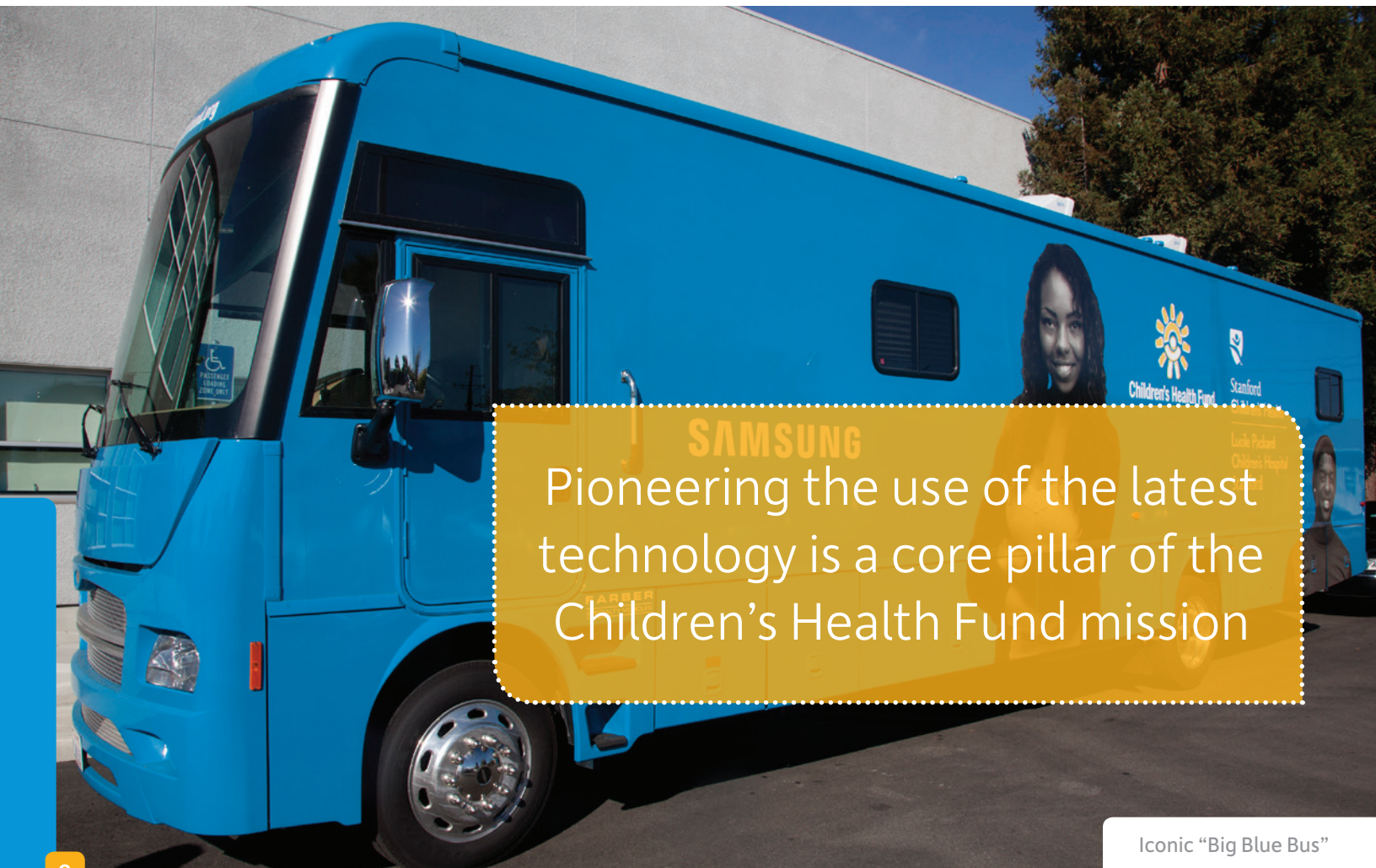
In Southern Florida, a four-year-old boy developed a skin rash that started spreading up his lower body. His mother, who had recently immigrated from Haiti, brought him to the mobile clinic that serves poor neighborhoods in Miami and its environs. The boy was in distress and the mother was quite worried.

The medical team on the mobile clinic was happy to help, but they needed a specialist to diagnose the condition. Fortunately, the unit had recently been upgraded with telehealth technology that allows a doctor or nurse on the clinic to scan the condition and share it with a specialist back at the hospital,

who can make a diagnosis and prescribe a course of treatment. The boy's rash was treated, and he made a full recovery. For disadvantaged families, who often don't have transportation or can't take the day off from work to make a trip to a specialist, this can make the difference between getting prompt treatment or continuing to suffer.

Pioneering the use of the latest technology is a core pillar of the Children's Health Fund mission. We have been making tremendous strides in expanding access to care, overcoming barriers that keep children from getting care, and improving quality of care.

Much of this work comes out of our partnership with the Samsung Corporation, which launched our Samsung Center for Innovation. In April 2016, we published the second major white paper from



Iconic "Big Blue Bus"



the Samsung Innovation Center. The paper—entitled “15 Million Kids in Health Care Deserts: Can Telehealth Make a Difference?”—showcases innovative pediatric telehealth programs from around the country and explores how we can harness the potential of these programs to help connect young patients to specialists.

The paper was released at a special Congressional briefing on Capitol Hill. U.S. Senator Roger Wicker (R-MS) gave a keynote address at the briefing. Advocating in the halls of government is another demonstration of our multifaceted approach to improving health care for children. All of this work—whether face to face with our patients, or beamed across wireless networks at the speed of light—is part of our relentless drive toward a healthier future for America’s kids.



Dr. Delaney Gracy, CHF Chief Medical Officer, performs a checkup



Senator Roger Wicker (R-MS) delivers the keynote address at a special Congressional briefing on telehealth

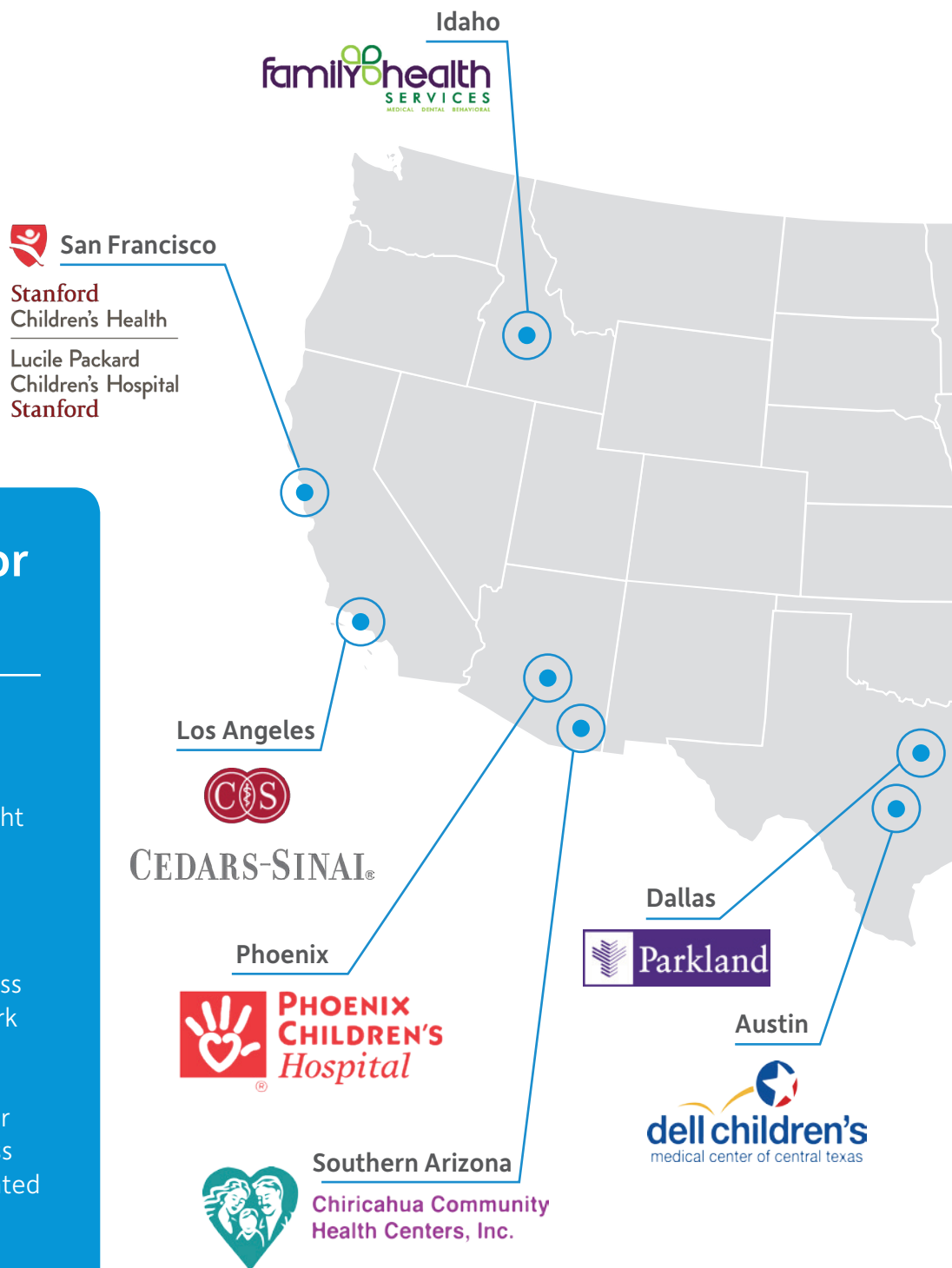
# Our **National Network**

# 24

Programs  
across the  
country

## A Medical Home for Every Child

For 30 years, Children's Health Fund has been battling barriers to healthcare for homeless and other vulnerable children. Out of that fight have come innovative solutions. It all began with one "big blue bus," a state-of-the-art mobile medical clinic that brought care directly to children in a New York City homeless shelter. Today, the National Network provides care through 24 leading-edge pediatric care programs and affiliates that serve children in poor rural and urban communities across the country. Each program is affiliated with a major teaching hospital or community health center, and reaches out to children in federally designated health professional shortage areas. Our network has so far provided nearly 4 million health encounters to kids and families, in some of the most disadvantaged communities in the nation.



# 366

 Service Sites

# 53

 Mobile Clinics





# 290

THOUSAND

Visits in 2016 alone

# 3.9

MILLION

Health encounters with kids and families to date

Every child in every neighborhood deserves access to a doctor



Alan Shapiro, MD, Senior Medical Director of South Bronx Health Center

# Board of Directors

**Irwin Redlener, MD**  
CO-FOUNDER AND PRESIDENT EMERITUS

**Paul Simon**  
CO-FOUNDER

**Robert Essner**  
CHAIR (2015)

**Hervé Sedky**  
VICE CHAIR (2015)  
CHAIR (2016)

**Jeffrey S. Maurer, Esq.**  
TREASURER

**Karen B. Redlener, MS**  
SECRETARY

**Robert F. Tannenhauser, Esq.**  
CHAIR EMERITUS

**Martha Molina Bernadett, MD, MBA**

**Sean F. Cassidy**

**Chuck Close**

**Honorable David N. Dinkins**

**Dipal Doshi (2016)**

**W. Robert Friedman, Jr.**

**Alex Karnal**

**Samuel A. Keesal, Jr., Esq**

**Paul A. Metselaar**

**Robert C. Osborne**

**Jane Pauley**

## Advisory Board

**Vincent Ahonkhai, M.D.**  
SENIOR REGULATORY OFFICER,  
GLOBAL HEALTH DELIVERY  
BILL AND MELINDA GATES FOUNDATION

**Marc Anthony**  
SINGER / SONGWRITER

**Doug Bauer**  
EXECUTIVE DIRECTOR  
THE CLARK FOUNDATION

**Ron Berger**  
FORMER CEO & CCO  
EURO RSCG WORLDWIDE

**Lori J. Bertman**  
PRESIDENT & CEO  
PENNINGTON FAMILY FOUNDATION

**Robert Burkett**  
GEORGETOWN UNIVERSITY

**Jodi S. Cohen, Esq.**  
PARTNER, KEESAL, YOUNG & LOGAN

**Jill DeSimone**  
HEAD US ONCOLOGY COMMERCIAL UNIT  
MERCK

**Joshua Dines, M.D.**  
HOSPITAL FOR SPECIAL SURGERY

**Honorable Christopher J. Dodd**  
CHAIRMAN & CEO  
MOTION PICTURE ASSOCIATION OF AMERICA

**Ann Druyan**  
CEO, COSMOS STUDIOS

**Fred Francis**  
COMMUNICATIONS CONSULTANT, FORMER  
NBC NEWS CORRESPONDENT

**H. Jack Geiger, M.D.**  
ARTHUR C. LOGAN PROFESSOR EMERITUS  
OF COMMUNITY MEDICINE  
CITY UNIVERSITY OF NEW YORK MEDICAL SCHOOL

**Anne Grissinger**

**Cecilia Gonzalo**  
MANAGING DIRECTOR, VATERA HOLDINGS, LLC

**Charles Grodin**

**Lars Gronning**  
MANAGING DIRECTOR, GOLDMAN SACHS & CO.

**Victor Imbimbo**  
CEO, CARING TODAY

**Gloria M. Janata, J.D.**  
PRESIDENT AND SENIOR PARTNER, TOGORUN

**Michael S. Kappy, M.D.**  
CHILDREN'S HOSPITAL COLORADO  
ENDOCRINOLOGY

**Dan Klores**  
FOUNDER, DKC

**Michael Kluger**  
MANAGING DIRECTOR, ALTARIS CAPITAL PARTNERS

**Jeff Kramer**  
OK MANAGEMENT

**Jeffrey M. Krauss**  
MANAGING MEMBER, PSILOS

**Joel H. Lamstein**  
PRESIDENT, JOHN SNOW, INC.

**Michelle (Mick) Lee**  
FOUNDER, WINIT WOMENINTRAVEL

**Wynton Marsalis**

**Don Mattingly**

**Craig Maurer**  
MANAGING DIRECTOR, U.S. EQUITY RESEARCH  
CLSA AMERICAS, LLC

**Honorable George J. Mitchell**

**Julianne Moore**

**Chazz & Gianna Palminteri**

**Steve Ricchetti**  
COUNSELOR TO VICE PRESIDENT BIDEN

**Alvin Sarter**  
MANAGING MEMBER, TREUHOOLD CAPITAL GROUP  
LLC

**Robin Shahani**  
MANAGING DIRECTOR, PROCUREMENT  
& COO STRATEGY, TD AMERITRADE

**William Shore**

**Joan Steinberg**  
PRESIDENT, MORGAN STANLEY FOUNDATION

**Garry Trudeau**

**Dale C. Van Demark, Esq.**  
PARTNER, MCDERMOTT WILL & EMERY

**Joseph W. Werthammer, M.D.**  
PROFESSOR AND CHAIRMAN, DEPT. OF PEDIATRICS  
MARSHALL UNIV. SCHOOL OF MEDICINE



# Corporate Council

## HONORARY CHAIR

**Honorable John D. Rockefeller IV (D-WV)**  
United States Senate

## TRUSTEES

### DEERFIELD FOUNDATION

**Jeff Kaplan**  
Partner, Deerfield Management

**Alex Karnal**  
Partner, Deerfield Management

### GSK

**Michael Fleming**  
Head, Corporate Reputation  
and Stakeholder Engagement

### MORGAN STANLEY

**Joan Steinberg**  
Managing Director; President, Morgan Stanley Foundation

### SAMSUNG

### SANOFI US

### UNITEDHEALTH GROUP

### VERIZON FOUNDATION

**Rose Stuckey Kirk**  
President, Verizon Foundation

## STEERING COMMITTEE

### JAGUAR LAND ROVER

## PARTNERS

### AMERICAN EXPRESS COMPANY

**Andrew Thomas**  
Vice President  
Loyalty Program Management

### COHN & WOLFE

**Donna Imperato**  
CEO

**Olga Fleming,**  
Executive Vice President, Managing Director  
NY Healthcare Practice

### HESS CORPORATION

**Paula Luff**  
Vice President, Corporate Social Responsibility

### KEESAL, YOUNG & LOGAN

**Samuel A. Keesal, Jr., Esq.**  
Partner

### MCNEIL CONSUMER HEALTHCARE - A DIVISION OF JOHNSON & JOHNSON INC.

**Holly Derrick**  
OTC Brand Communications

### MERCK

**Mark Feinberg, MD**  
Vice President, Public Health and Scientific Affairs

### MOLINA HEALTHCARE, INC.

**Martha Bernadett, MD, MBA**  
Executive VP

### PFIZER

## MEMBERS

### BRISTOL-MYERS SQUIBB COMPANY

**Ron Miller**  
Vice President, Policy & Federal Government Affairs

### CANTOR FITZGERALD RELIEF FUND

**Edie Lutnick**  
Co-Founder and President

### THE NASCAR FOUNDATION

### OVATION TRAVEL GROUP

**Paul Metselaar**  
Chairman

# 2015 Statement of Revenue & Expenses

## EXPENSES

National Programs	\$ 5,246,688		
New York City Programs	\$ 2,208,416		
Public Health & Crisis Response	\$ 299,028	Fundraising	\$ 1,398,086
Education	\$ 1,306,097	Management & General	\$ 1,385,072
<b>Total Program Services</b>	<b>\$ 9,060,229</b>	<b>Total Expenses</b>	<b>\$ 11,843,387</b>

## REVENUE

### Contributions

Foundations	\$ 3,084,248
Corporations	\$ 4,460,357
Individuals	\$ 3,140,253

Government Grants	\$ 338,676
Special Events	\$ 651,561

**Total Revenue Raised \$ 11,675,095**

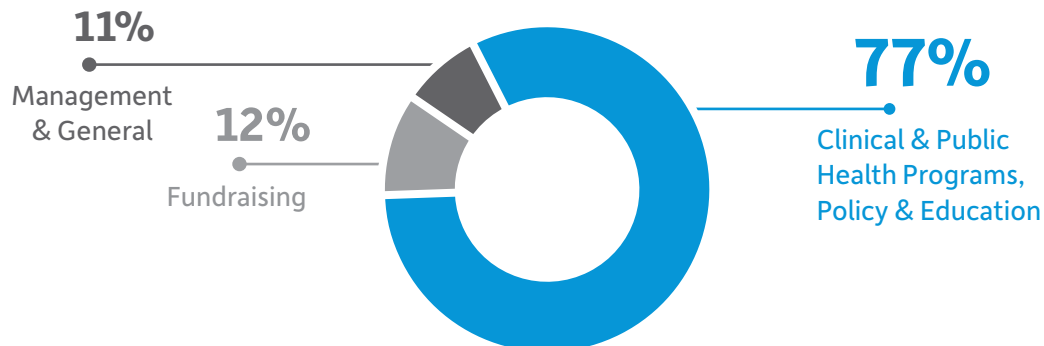
Net Increase in Funds \$ -203,722

Net Assets \$ 6,313,161  
BEGINNING OF YEAR

Net Assets \$ 6,109,439  
END OF YEAR

Interest & Dividends,  
and gains of investments \$ -35,430

**Total Revenue \$ 11,639,665**





# 2016 Statement of Revenue & Expenses



## EXPENSES

National Programs	\$ 4,690,932		
New York City Programs	\$ 2,707,348		
Public Health & Crisis Response	\$ 244,118	Fundraising	\$ 1,303,762
Education	\$ 1,491,768	Management & General	\$ 1,240,450
<b>Total Program Services</b>	<b>\$ 9,134,166</b>	<b>Total Expenses</b>	<b>\$ 11,678,378</b>

## REVENUE

### Contributions

Foundations	\$ 4,828,095
Corporations	\$ 2,786,494
Individuals	\$ 2,082,008

Government Grants	\$ 436,567
Special Events	\$ 1,347,790

**Total Revenue Raised** \$ 11,480,954

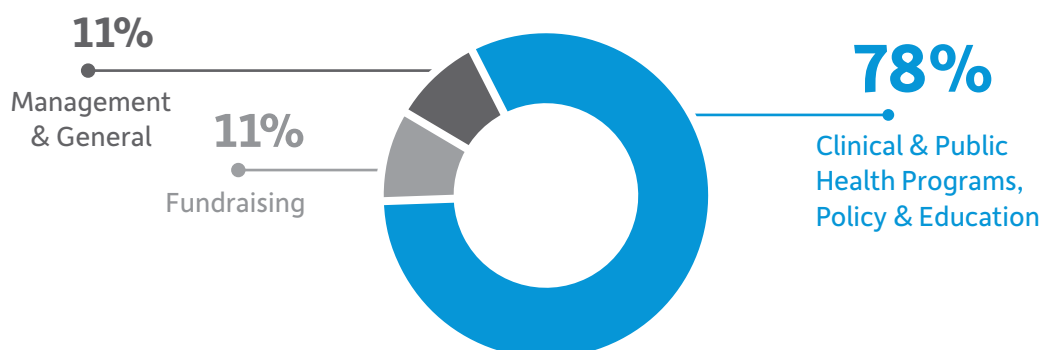
Net Increase in Funds \$ 3,148

Net Assets  
BEGINNING OF YEAR \$ 6,109,439

Net Assets  
END OF YEAR \$ 6,112,587

Interest & Dividends,  
and gains of investments \$ 200,572

**Total Revenue** \$ 11,681,526



# Corporate and Foundation Donors 2015-2016

Donor levels represent cumulative giving during fiscal years 2015 and 2016, January 1, 2015 through December 31, 2016.

## \$1 million and OVER

Comic Relief  
Deerfield Foundation  
Robin Hood  
Sanofi Foundation for North America  
Walmart Foundation

## \$500,000 - \$999,999

The Carson Family Charitable Trust  
The City Council of the City of New York  
Estate of John Strang  
GlaxoSmithKline  
H&M Foundation  
Morgan Stanley Foundation  
Samsung Electronics America, Inc.

## \$200,000 - \$499,999

Anonymous  
Child Welfare Fund  
Genesee Health System  
The Kresge Foundation  
NYS Office of Mental Health

## \$100,000 - \$199,999

ACE Charitable Foundation  
Agnes Varis Charitable Trust  
Cablevision Systems Corporation  
Insurance Industry Charitable Foundation  
Merck & Co., Inc.  
Keesal, Young & Logan  
William Randolph Hearst Foundation

## \$50,000 - \$99,999

The Ambrose Monell Foundation  
American Express  
Blue Cross and Blue Shield of Louisiana Foundation  
Colgate-Palmolive Company  
DKC Public Relations, Marketing and Government Affairs  
Estate of Eleanor Margaret Rushworth  
Irene W. & C.B. Pennington Foundation

J.M. Kaplan Fund, Inc.  
Joey Logano Foundation  
McNeil Consumer Healthcare  
The New York Community Trust  
van Ameringen Foundation, Inc.

## \$25,000 - \$49,999

American Electric Power Foundation  
Anonymous  
Berthe M. Cote Foundation  
Broadridge Financial Solutions, Inc.  
Charles A. Frueauff Foundation  
City National Bank  
Edward Jones  
Etihad Guest LLC  
Evalyn M. Bauer Foundation  
Focus for Health  
Euro RSCG Life Worldwide  
The Huey and Angelina Wilson Foundation  
Louis and Anne Abrons Foundation, Inc.  
MetTel  
Montefiore Medical Center  
Pager  
Sojo Studios  
The Winters Family Fund  
William J. and Dorothy K. O'Neill Foundation

## \$10,000 - \$24,999

America's Charities  
Anne R. Dow Family Foundation  
Anonymous  
BCD Travel  
Cantor Fitzgerald, L.P.  
Carlyle Group  
Cegedim Dendrite  
Centerbridge Foundation  
Citi Commercial Bank  
Congregation Emanu-El Of The City Of New York  
CRG Management  
CVS Health Foundation  
The Dammann Fund, Inc.  
eClinicalWorks  
FIMF, Inc.  
Focus Technology Solutions, Inc.  
Grey Group

HLMH, Inc.  
Jean and Louis Dreyfus Foundation, Inc.  
Josephine Lawrence Hopkins Foundation  
Katten Muchin Rosenman LLP  
Masimo Corporation  
MassMutual Financial Group  
Morgan Stanley  
NBTY, Inc.  
New York Yankees Foundation  
Pharmaceutical Product Development, LP  
Quest Diagnostics Incorporated  
Reed Exhibitions  
The Edward and Dorothy Perkins Foundation  
The Hexberg Family Foundation  
Louis and Harold Price Foundation  
The New Yankee Stadium Community Benefits Fund  
The RosaMary Foundation  
Verizon Foundation  
William E. Simon Foundation

## \$5,000 - \$9,999

Amicus Therapeutics, Inc.  
BJ's Charitable Foundation  
Bloomingdale's  
Boo Grigsby Foundation  
BMI  
C. R. Bard Foundation, Inc.  
Charles and Mildred Schnurmacher Foundation, Inc.  
Charles Schwab Foundation  
Concord Music Group, Inc.  
DeLong Family Charitable Foundation  
Dr. Robert C. and Tina Sohn Foundation  
EMLE, Inc.  
Fitzpatrick, Cella, Harper & Scinto  
Freeman Expositions  
General Motors Corporation  
The Hyde and Watson Foundation  
Ira M. Resnick Foundation, Inc.  
Joan Hornig Jewelry  
Mercer  
Publicis Healthcare  
Sarah Schieffelin Residuary Trust  
Susan Zirkl Z.I. Memorial

Charitable Foundation  
Ten2Eleven Business Solutions LLC  
The Quantic Group, Ltd.  
Valero Energy Foundation  
Zurich North America

## \$2,500 - \$4,999

BLH Technologies, Inc.  
Cohn & Wolfe  
Deloitte  
E. Joseph Evans Charitable Trust  
The Kaplan Family Foundation  
Leanin' Tree  
The Leo S. and Emogene Burton Case Foundation  
McQuade Family Foundation  
Phillips Lytle LLP  
Time Warner Inc.  
TogoRun  
Will Run For Bling & Charity  
Zeno Group

## \$1,000 - \$2,499

AmeriCares  
The Becket Family Foundation  
The Briar Foundation  
The Chris & Melody Malachowsky Family Foundation  
Covington & Burling LLP  
The Eric and Joan Norgaard Charitable Trust  
The Freidman Family Fund  
Hackensack Pathology Associates, LLC  
JM Zell Partners, LTD  
John Snow, Incorporated  
JRM Refinery LLC  
Kaplan Family Charitable Fund  
Metzger-Price Fund, Inc.  
Moët & Chandon  
North Star Foundation Inc.  
NYDG Foundation, Inc.  
The RM Cool Company  
RSW Foundation Inc.  
Square (Unknown Transactions)  
Stubhub, Inc.  
Tucows Inc.  
Unity Church of Christianity  
Willis Towers Watson



# Individual Donors 2015-2016

Donor levels represent cumulative giving during fiscal years 2015 and 2016, January 1, 2015 through December 31, 2016.

## \$500,000 and OVER

Robert and Anne Essner  
Jane and Garry B. Trudeau

---

## \$250,000 - \$499,999

Carol and Eugene A. Ludwig  
Amy and Leonard Wessell

---

## \$100,000 - \$249,999

Anonymous  
Judi and David Dines, M.D.  
Richard and Anne Grissinger  
Donald H. Layton and Sandra Lynn Lazo  
Wendy and Jeffrey Maurer  
Carol and Robert Tannenhauser

---

## \$50,000 - \$99,999

Anonymous  
Joseph and Michelle Jacobs  
Doris L. and Louis J. Lombardi  
Lisa and Paul Metselaar  
Missy and Allen Rosenshine  
Hervé Sedky

---

## \$25,000 - \$49,999

Anonymous  
Martha Bernadett, M.D. and Faustino Bernadett, M.D.  
Goldring Family Foundation  
Margaret and Bennett Goodman  
David A. Jacobs  
Peggy and Michael S. Kappy, M.D.  
Alex and Cassaundra Karnal  
Susan and Fredric Lary  
Julianne Moore and Bart Freundlich  
Mark J. Ohrstrom

Ellen and Richard Perlman  
Karen and Irwin Redlener, M.D.  
Laura Baudo Sillerman  
and Robert F. X. Sillerman  
Frank Zhang

---

## \$10,000 - \$24,999

Anonymous  
Karen H. Bechtel  
Peter F. Black  
Iris M. and Matthew L. Cohen  
Susan and Mark Dalton  
Kathryn and Joshua S. Dines, M.D.  
Susan P. Friedman  
Gabriel Haim  
Susan and Alan Kosten  
Jeff Kramer  
Brian Mintz  
Clare and David Pulman, Ph.D.  
Shlomo Y. Rechnitz  
Mr. and Mrs. Gerald Ritzer  
Lily Safra  
Robin Shahani  
Sabrina Spitaletta  
Jan and Cathy Voigts  
Elise Wang

---

## \$5,000 - \$9,999

Jacqueline Akiva  
Anonymous  
Baskes Family Foundation  
Leonard and Ruth Benowich  
Lauren J. and Richard H. Blanck, M.D.  
Jessica Casucci  
Claude Chemtob  
Jodi S. Cohen  
Joseph Daly  
Jill M. DeSimone and Greg Moisan

Randy and Robert Deutsch  
Elizabeth H. and Steven G. Edersheim  
W. Robert Friedman, Jr. and Ellen Hayes  
Karen B. Gauvreau  
H. Jack Geiger, M.D.  
and Nicole Schupf, Ph.D.  
Cecilia Gonzalo  
Milton Gumowitz  
Nancy Horsey  
Sandi and Harris Kalish and Family  
Jamie and Howard Klein  
Jeffrey M. Krauss  
Linda Krensky  
Laura Baskes Litwin and Stuart M. Litwin  
Kimberley A. and George R. Mark  
Stacie and Vivek Melwani  
Lisa and Aaron Morse  
Yvonne S. Pollack  
David A. Preiser  
The Rivera Family  
Beth Sackler, Ph.D.  
Andrew Sarofim  
Mark Schupack  
Deborah and David Shapiro  
Karen Share  
Wendy and Michael Sidley  
Shelley and David Sonenberg  
Elizabeth Star  
Michael Tannenhauser  
Jim Tricarico  
Rachel Trudeau  
Lisa Wang  
Pamela and Mark Weinstein

---

## \$2,500 - \$4,999

Anonymous (2)  
Donna and Ricardo M. Baptista  
Garrard Beeney and Evan Mason  
Frederique Behm-Rose

# Individual Donors (continued)

Karen and Ron Berger  
Katie Cancro  
Catherine Chang  
Cathy Chernoff  
Edward A. Chernoff  
Charles Davidson  
Alma DeMetropolis  
Kathy S. Edelman  
Margaret and Michael Farmer  
Victoria and Josh Feltman  
Sander and Mechele Flaum  
Howie Furst  
Neel Gandhi, M.D.  
and Aarti Agarwal, M.D.  
Ellen and Irving Grauer  
Barbara and Eugene Greene  
Alexandra and Ron Hartenbaum  
Fred and Noreen Hassan  
Steve Hayes  
Victor F. Imbimbo, Jr.  
Greg Irace  
Lili Irani-Momtaz  
Dianne and Thomas M. Jones  
Linnea E. and Peter F. Knecht  
Karen Kuria  
Jamie A. Leder  
Brett Lee  
Kenneth R. and Grace Logan  
Kathleen and Edward J. Ludwig  
Jennifer and Matthew Maranz  
Lucy K. Marks and Scott Sprinzen  
Jillian Martin  
Lynn Mauro  
Robin and Roger Meltzer  
Lori and David Moore  
Daria and Mitchell R. Myers-Schrage  
The Osborne Group, Inc.  
Darryl Pitt  
Mary Alice and Richard G. Schiller

Laura Scott  
Becki B. and Thomas Seddon  
Noah Shachtman  
Neal Shapiro  
Rony Shimony, M.D.  
Marc Tanner  
Edward G. Turan  
Andrew M. Upton  
Ania Wajnberg, M.D.  
and Michael Redlener, M.D.  
Vesha Wallace  
Donnette and Dennis Walto  
Eric Yee

---

**\$1,000 - \$2,499**

Vincent I. Ahonkhai, M.D.  
Todd Akes  
Elizabeth Alfano  
Brian F. Amery  
Anonymous (2)  
John and Debra Apruzzese  
Steve Austin  
Diandra Ayala-Peacock  
Charles A. Baillie  
Rishi Bajaj  
Jeffrey Barnes  
Peter Baumgartner  
Tyson Beckford  
Marsha Berkowitz and Wayne S. Kabak  
Stanley Bogen  
Nicholas Bonacci  
Lisa M. and Joseph P. Borella  
Dianne D. Brandi  
Matthew Burdick  
Maya Burkenroad  
Sarah Burns and Sebastian Heath  
Camila Cabello  
Martin Cantor  
Andrew D. Chayut

Rosa Ana and Richard Chazin, M.D.  
Lewis Cheney  
Michele and Martin Cohen  
Valeria J. Cohen  
Pat Comunale  
Lee Cummings  
David Cunn  
Elizabeth Donnelly  
Edward Emerson  
Jinesh Gandhi  
Mark Gherity  
Ira Gilbert  
Debra Brenin Goldfischer, M.D. and  
Michael Goldfischer, M.D.  
Mary Hall Gregg and Thomas L. Purdy  
Ellen and Efraim Grinberg  
Bryant C. Gumbel and Hilary Quinlan  
Rita and Tom Hanks  
Robin and Darrell Harvey  
Jamal H. Haughton  
Edward S. Hillenbrand  
Winnie Holzman and Paul Dooley  
Laura Hunter  
Jill and Kenneth Iscol  
Elise Jacobs Blanck  
Maria G. and Ross L. Jacobs  
Janet Kagan  
Katherine and Richard Kahan  
Amy and Mitchell Kaneff  
Lester Kaplan  
Sanjeev Kapoor  
Irit and Paul Kerner  
Stacey Lane  
Michael Langhoff  
David Lederman  
Karen and Joe C. Leonard  
Peter Maltin  
Debbie L. Mandelker  
Michael Marin



# Individual Donors (continued)

Kenneth E. Meister	Lauren E. Purcell	Todd Squilanti
Brett Messina	Thais Recarte	Dolores Storch
Ron C. Miller	Joyce and Steven Robinson	Molly J. Tatman
Nancy Miller-Rich and Jeffrey Rich	Mark Roellig	Lee Yeow D. Teo
Cathy E. Minehan	J. Z. Rosenblatt	Dennis Thomas
Frank Montaturo	Sheri and James Rosenfeld	Margaret and Bradley Tolkin
Troy A. Mooyoung	Thomas Russ	Victoria Vance Weiskopf
Dr. Barton and Mrs. Barbara Nassberg	Ken and Mette Schafer	Sarah Rosenwald Varet and Jesse Coleman
Judy Nguyen	Joanne Schechter	Anke M. and Paul Volcker
Barbara Niederkofler, Esq.	Chris and Jackie Schulze	Cloy J. (Mike) and Arline B. Walter
Mary Nittolo	Donald Schupak	Jamie Weisman
Kate Ottino	Susan Shane	Barry Weiss
Walter Panis, M.D.	Michael Share	Robert Wise
Mitchell Perlstein	Pratik Sharma	Charlotte Wray
General Colin L. Powell, USA (Ret.)	Alison and John D. Shulman	Peter M. Wright
The Powers Family	William and Fay Shutzer	Laurie Zucker and David Lederman
Frank Prescott	Mark Solomon and Cheryl D. Rosen	
Jonathan Pueschel	Yvonne Southerland	



## 2015 Annual Benefit



Lori Bertman and  
Paula Pennington de la Bretonne



Jane Pauley and Julianne Moore



Julianne Moore, Gregory Lee (Samsung),  
Irwin & Karen Redlener

Children's Health Fund's 2015 Annual Benefit, held at Jazz at Lincoln's Center's Frederick P. Rose Hall, was a night filled with music and celebration. Guests were treated to performances by fifteen-time Grammy Award winner Bela Flek with Abigail Washburn, and top jam band "moe." Two generous friends of Children's Health Fund were honored: Lori J. Bertman, President and CEO of the Pennington Family Foundation, was presented with the Founders' Award for sustained support of CHF; and Gregory Lee, President and CEO of Samsung, was honored for Samsung's commitment to bringing cutting edge technology to our mobile medical units.

## 2015 Party for Potential



DJ D-Nice



Benefit Committee Co-Chairs Dave Jacobs  
and Bobby Steinsdoerfer



Bobby Steinsdoerfer, Dennis Walto, and Jacqueline Akiva

The third annual Party for Potential, held at the downtown Manhattan club 1 OAK, brought together young professionals to raise awareness and funds for Children's Health Fund's programs. With a DJ set by D-Nice, there was plenty of fun to be had, while guests also learned more about CHF's mission of providing health care to the nation's most underserved children.



## 2016 Annual Benefit



Hervé Sedky, The Honorable David Dinkins, Irwin & Karen Redlener, Dennis Walto



Mayor Bill de Blasio with Harry Belafonte



Morgan Freeman, Harry Belafonte, and Dr. Irwin Redlener

Hundreds gathered at the glittering ballroom of the Mandarin Oriental on June 7, 2016 for Children's Health Fund's Annual Benefit to support health care for children living in poverty across America. At this year's benefit, celebrating 29 years of service to America's kids, Children's Health Fund honored legendary singer and activist Harry Belafonte with its Humanitarian Award. His good friend, Oscar-winning actor Morgan Freeman, was on hand to present the award, and another longtime friend, folksinger/activist Joan Baez, paid tribute to Mr. Belafonte with a video message and song. The gala also enjoyed the presence of not one, but two New York City mayors! David Dinkins, one of the founding board members of Children's Health Fund, was joined by New York City's current mayor, Bill de Blasio, both of whom spoke eloquently about the importance of providing health care in order to give every child a chance to thrive.

## 2016 Party For Potential



MetTel staff and other guests



Tyson Beckford and Jacqueline Akiva



Dave Jacobs and Andy Adler

The fourth Party for Potential, which was held in September 2016 at 1 OAK, brought together young professionals with an interest in learning about our mission and supporting our work. Renowned model Tyson Beckford was the special host of the evening, with Honorary Chair Richie Akiva and Benefit Co-Chairs Dave Jacobs and Bobby Steinsdoerfer presiding over an evening of drinks, mingling, and dancing to the tunes of Grammy Award winner DJ Mick. The evening, which was sponsored by MetTel, DKC, Katten and Zurich, among others, featured an auction that gave guests the opportunity to bid on providing specific health services to kids in need.



[TWITTER.COM/CHFUND](https://twitter.com/CHFUND)



[FACEBOOK.COM/CHILDRENSHEALTHFUND](https://facebook.com/CHILDRENSHEALTHFUND)

215 WEST 125TH STREET, SUITE 301 | NEW YORK, NY 10027 | 212-535-9400

[www.childrenshealthfund.org](http://www.childrenshealthfund.org)